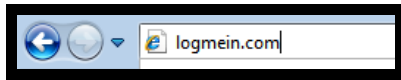




# How to set up LogMeIn Free



1. OPEN your Internet Browser and type in [www.logmein.com](http://www.logmein.com) in the Address Bar



then PRESS Enter.



2. CLICK **Try It Free** on the window.

3. CHOOSE the first option.

How will you use LogMeIn?

I want to access files, applications and desktops on remote computers.  
We recommend a free trial of LogMeIn Pro<sup>2</sup>. Later, you can use this account for LogMeIn Free, Central, Hamachi<sup>2</sup>, or Backup.

I want to provide remote support without pre-installed software on PCs, Macs, and smartphones.  
We recommend a free trial of LogMeIn Rescue.



4. CLICK **Continue**.

5. ENTER your email address and your password.

Email   
Use a valid email address to receive an activation email.

Confirm Email   
[View our privacy policy.](#)

Password

Confirm Password

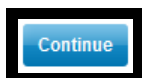
[Password Strength](#)

6. CHOOSE your country.

Country

7. CHOOSE Personal use

I plan to use LogMeIn for:



8. CLICK **Continue** and WAIT a few seconds.




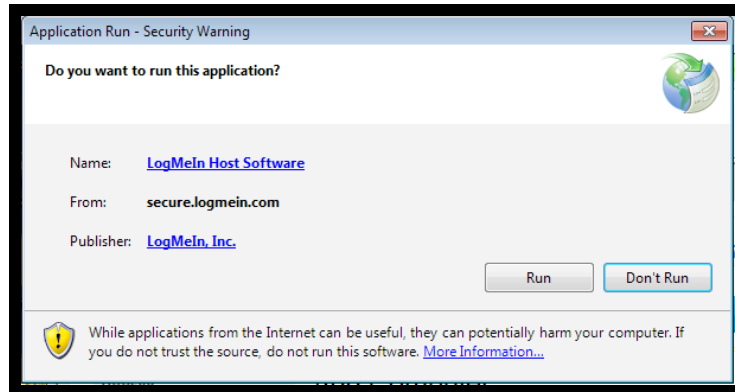
## How to set up LogMeIn Free




9. CLICK  Add this computer.

10. CLICK  Install LogMeIn.

11. Your internet protection may cause the File Download - Security Warning window to appear. CLICK  Run. The download should start. If Java is not installed, you may be asked to install Java Runtime. WAIT for the download to finish.



12. The LogMeIn installation screen should show up after the download is complete, like the one below. CLICK  Next.

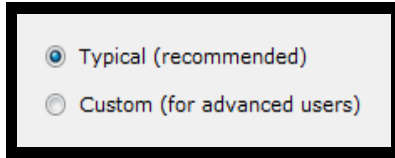


13. CLICK  I Agree.

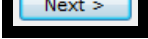
14. CHOOSE Typical.



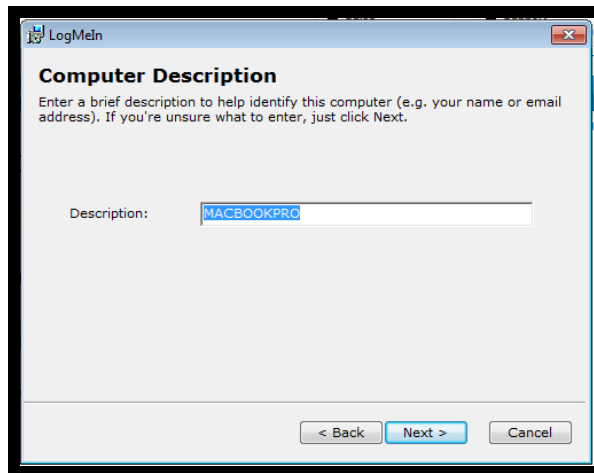
## How to set up LogMeIn Free



Typical (recommended)  
Custom (for advanced users)

15. CLICK  Next.

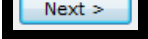
16. CHANGE the Description to something more meaningful that is at least 8 characters long.



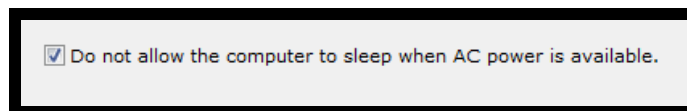
LogMeIn  
**Computer Description**  
Enter a brief description to help identify this computer (e.g. your name or email address). If you're unsure what to enter, just click Next.

Description:

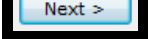
< Back Next > Cancel

17. CLICK  Next.

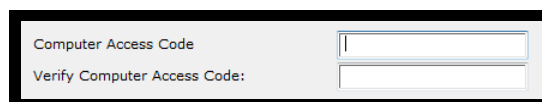
18. CHECK the box.



Do not allow the computer to sleep when AC power is available.

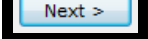
19. CLICK  Next

20. CREATE a Computer Access Code. It should be at least 8 characters long.  
PLEASE WRITE THIS CODE DOWN you will need to give it to me: \_\_\_\_\_



Computer Access Code:

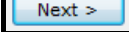
Verify Computer Access Code:

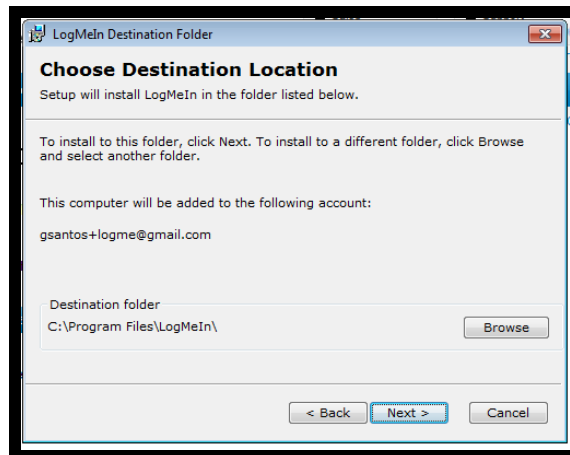
21. CLICK  Next.



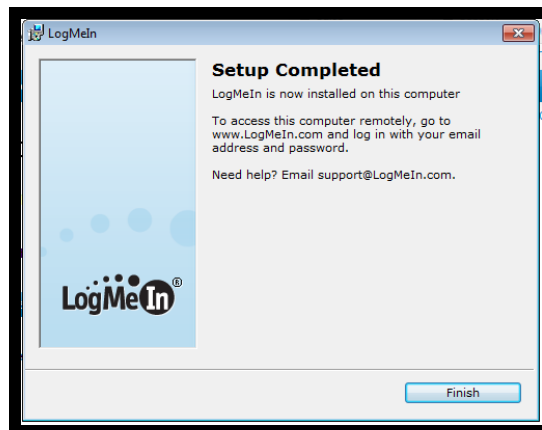
## How to set up LogMeIn Free



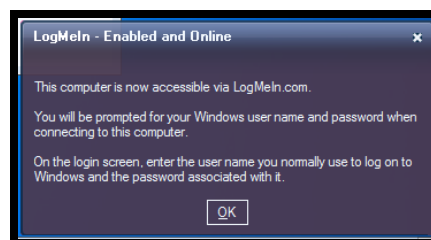
22. CLICK  Next again in the Choose Destination Location screen to start the install. Your screen may flicker during the installation process.




23. CLICK  Finish when you see the window below.



24. CLICK the OK button in the lower right corner of the screen.



To verify your installation is active, you will see the  LogMeIn icon near the time display.



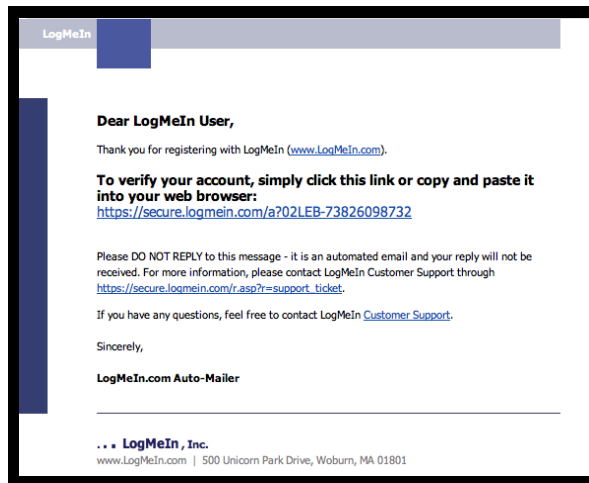
25. You should receive an email similar to the one below. CLICK on the link to



## How to set up LogMeIn Free



activate your LogMeIn account.



26. Your installation is complete and awaiting a connection. You are now ready to CALL (07 3843 6040) with your email address and passwords.